

Case Study

Clarifying Roles



| | |
|--------------------------|----------------------------------------------------------------------------|
| Practice Area | Process Mapping in order to explain how a new service will be implemented. |
| Customer Industry | B-BBEE management services and technology solutions |
| Length | Effort 15 ours per month. Duration: One month |
| Location | Johannesburg and Cape Town, South Africa, |



The Assignment:

BISA is based in South Africa and provides of B-BBEE management services and technology solutions for small and large business, institutions, industry charter councils, and government organizations.

TenStepSDO partnered with BISA in a workshop and subsequent mapping of the e-Vendor Registration process for BISA. This aided in presenting how the final system would interact with the user and to assist the developers in developing a solution that meets the needs of the Business Group. This work was done remotely, using skype and shared screens, with the map being developed real time.

The Value derived:

This resulted in buy-in from the business executives, a clear understanding of roles and risks, and the development of a customized e-Vendor system that met the needs of the major business group.

www.b1SA



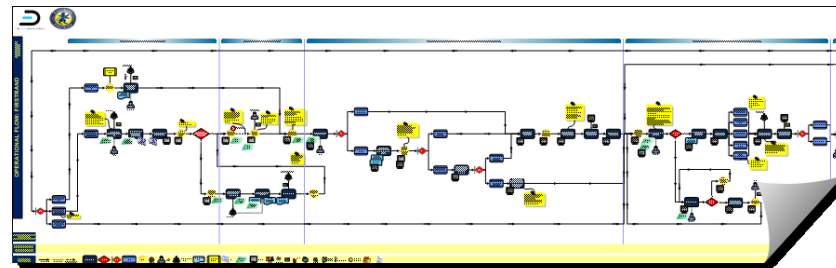
B1SA - Be One South Africa

Forward Thinking BEE Solutions

At B1SA we've done a lot of thinking about Broad-based Black Economic Empowerment (B-BBEE). We've recognised the common and often unique problems that companies experience when trying to administer those compliance and transformation objectives.

We are the leading provider of B-BBEE information management, training and administrative solutions for small and large business, institutions, industry charter councils, and government organisations.

www.pétanque-c.com



Real-time
Fun Visual
Information-rich
Cutting-edge
Engaging
Interactive